

Dealing with Orthodontic Emergencies at Home

The following tips will help you deal with emergency's at home.

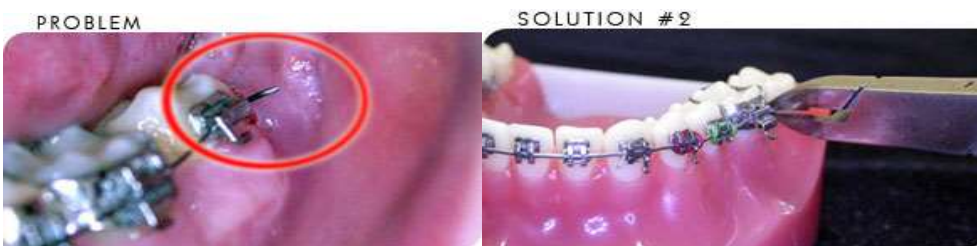
However, if you are not able to deal with your problem or have any concerns, then please contact us at the practice on 0118 966 4511.

1. Ligature tie-end digging in:



If this happens, use a clean eraser on the end of a pencil or Q-tip to try to tuck it round the bracket.

2. Wire digging in:



For the first couple of visits (due to the flexibility) of the wire, it is often possible to trim the end with a clean pair of nail scissors/ clippers.

3. If you have had extractions:



Where there is a span of wire across the site of the extraction the wire can sometimes come out of the very back band/bracket during chewing. If this happens use a clean pair of tweezers to guide the wire back in to the tube.

Please click on the following link to view our Youtube video for further information and guidance on how to deal with some common problems with fixed appliances:

<https://www.youtube.com/watch?v=7R1rHwnJS98>